

The background is a dark, textured painting. It features several houses with glowing windows and doors, suggesting an afterglow. The houses are rendered in light, almost white tones, contrasting with the deep blues, purples, and browns of the surrounding environment. Bare trees with thin branches are scattered throughout the scene, some with small white blossoms or leaves. The overall mood is quiet and contemplative.

ALEX GRIFFIN  
*Afterglow*

M  
G

ALEX GRIFFIN  
*Afterglow*

JANUARY 10 – FEBRUARY 17, 2023

NANCY MARGOLIS GALLERY



# *Afterglow*

NANCY MARGOLIS GALLERY

In *Afterglow*, Philadelphia artist Alex Griffin conjures impressions of distant memories and dreamstates. Quiet figures hover weightlessly within gauzy landscapes that oscillate between solid and transparent areas of paint. The times of day are intentionally ambiguous, but recall in-between states, similar to twilight or the dim glow of midwinter. Heightening the aura of mystery, Griffin evokes timelessness by concealing the narratives' physical locations and precise moments in history. Many works feature the façades of modest dwellings and figures donned in plain dress, reminiscent of bygone eras. As though peering through a portal into another world, Griffin's narratives summon the notion that they'll continue developing even after we have stopped looking.

Griffin's artistic techniques enhance his mystical vision. Working with flattened perspectives, he constructs textural surfaces by layering paint that he then scrapes, erases, and etches into. Through this process, recovered bits of previous underpaintings are revealed, interacting with the new imagery and creating a conversation between past and present. The physicality of Griffin's paint leads to

atmospheres that are not simply seen, but felt. Their haziness destabilizes the depicted elements, giving them an illusory quality that more closely resembles mirages than tangible subjects. Distant houses appear faded and soft, as though remembered rather than observed. Three of the works are painted on discovered cigar boxes, underscoring the artist's interest in unique objects of history.

Signaling a departure from his earlier work, Griffin introduces a theatrical component in these new works. Several paintings portray fictitious stages with drawn curtains. Choreographed characters — some with the head of an animal — are seen performing in imagined roles. Certain elements bring to mind props rather than the true objects they represent, such as suspended clouds and five-pointed stars. Griffin blurs the line between fantasy and reality, nudging viewers to question what is fiction and what is real, what is seen and what is remembered. Just as a stage curtain opens to reveal another world, Griffin's paintings carry his audience into a setting of his own design.

**AGATHA'S DREAM**

2022

Oil on panel

20 x 24 inches



**A GATHERING**

2022

Oil on panel

18 x 18 inches



**NORTH RIVER**

2022

Oil on panel

20 x 20 inches



**CHIMERAS**

2022

Oil on canvas

16 x 20 inches





**AFTERGLOW**

2022

Oil on panel

20 x 24 inches



**NIGHTINGALE**

2022

Oil on panel

18 x 18 inches



**MIDWINTER**

2022

Oil on panel

12 x 12 inches



**THE GREY**

2019

Oil on paper

12.5 x 15 inches



**FOX RIDGE**

2022

Oil on cigar box

8.5 x 6.5 inches

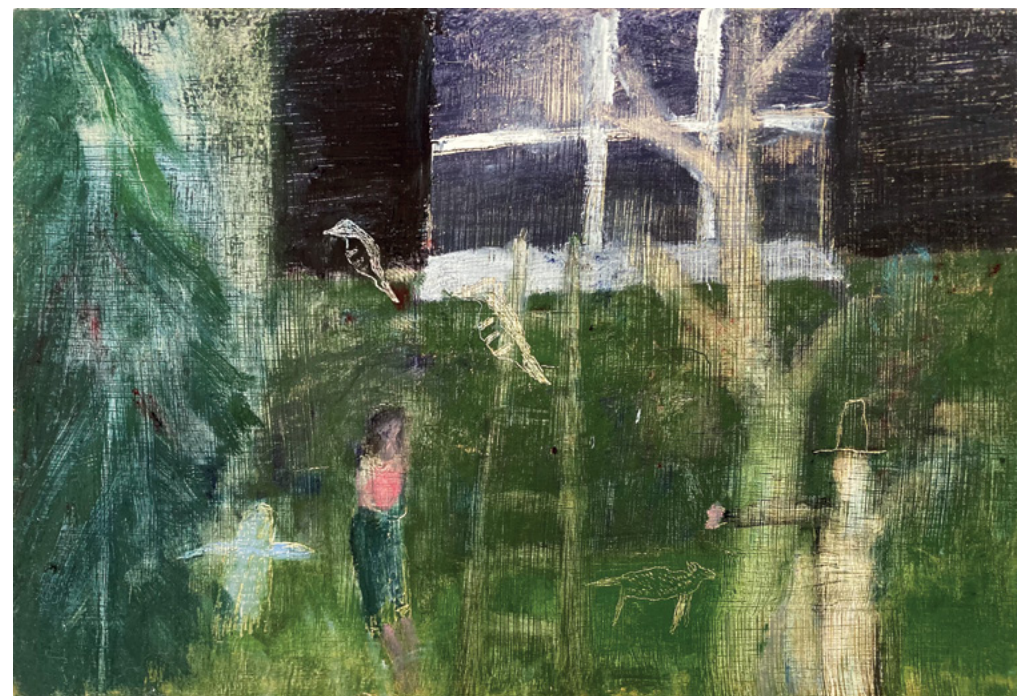


**BLOOM**

2022

Oil on cigar box

8 x 11.5 inches



**WINTER LIGHT**

2022

Oil on cigar box

7 x 5.7 inches





The works in *Afterglow* were painted over the past year. I usually entered the studio around nightfall and painted through the evening. I very rarely remember my dreams, or know if I have them. However, I feel the night brought out a dreamlike element in many of the paintings. There are stages, unusual creatures and a sense of living in between worlds. The paintings seem to be looking for something outside of the canvas.

— ALEX GRIFFIN





## EDUCATION

2008 B.F.A. Painting & Printmaking, Virginia Commonwealth University, Richmond, VA

## SELECTED EXHIBITIONS

- 2022 *Afterglow*, Nancy Margolis Gallery, online  
2021 *Passages*, Nancy Margolis Gallery, online  
*Hidden Threads*, HOT BED Gallery, Philadelphia, PA  
*Up Against the Wall*, Awbury Arboretum, Philadelphia, PA  
*12x12x12*, The Art Trust, West Chester, PA  
2020 *Please Do Not Touch*, LOUP.NYC, online  
*Scarlett Thicket Barn Studio*, Chester County Studio Tour, Kennett Square, PA  
*Peripheries*, Central Tattoo Studio, Philadelphia, PA  
2019 *First Encounters*, PII Gallery, Philadelphia, PA  
*Portraits*, Pagus Gallery, Norristown, PA  
*No Stone Unturned*, Spillway Collective, Philadelphia, PA  
*The Woodmere 78th Annual Juried Exhibit*, Woodmere Art Museum, Philadelphia, PA  
*GIFC Philadelphia*, Pilot Projects, Philadelphia, PA  
2018 *Ritual and Identity*, Ann Street Gallery, Newburgh, NY  
*First Date*, Automat Collective, Philadelphia, PA  
*PAM Exhibition*, Mainline Art Center, Haverford, PA  
2017 *Annual Fall Show*, Perkins Center for the Arts, Moorestown, NJ  
*Reflective Pool*, The Cluster Gallery, Brooklyn, NY  
*Art Mora Summer Group Show*, Ridgefield Park, NJ  
2011 *Artomatic*, Crystal City, VA  
*Gallery 788*, Baltimore, MD  
2008 *Interaction 32*, FAB, Richmond, VA  
*All Mixed Up*, Gallery 5, Richmond, VA

## PUBLICATIONS

2021 “Alex Griffin: Passages,” *The Brooklyn Rail*, Jennifer Rose Bonilla-Edgington

## ASSOCIATIONS

2017–19 The Professional Artist Membership (PAM) Program, Mainline Art Center, Haverford, PA





Catalogue © 2023 NANCY MARGOLIS GALLERY of NEW YORK, Inc.

Designed by Lilian Day Thorpe.

Courtesy of Nancy Margolis Gallery of New York, Inc. and Alex Griffin. All rights reserved.

No part of this publication may be reprinted, reproduced, or transmitted in any form or by any other means, electronic or mechanical now known or hereafter invented, without written permission of publisher.

[www.nancymargolisgallery.com](http://www.nancymargolisgallery.com)

[margolis@nancymargolisgallery.com](mailto:margolis@nancymargolisgallery.com)

