



ACTIVATED SPACES

AUGUST 4 – SEPTEMBER 4, 2022

SARAH LUBIN • MARK MILROY • BRIAN REGO • GAIL SPAIEN



NANCY MARGOLIS GALLERY PRESENTS

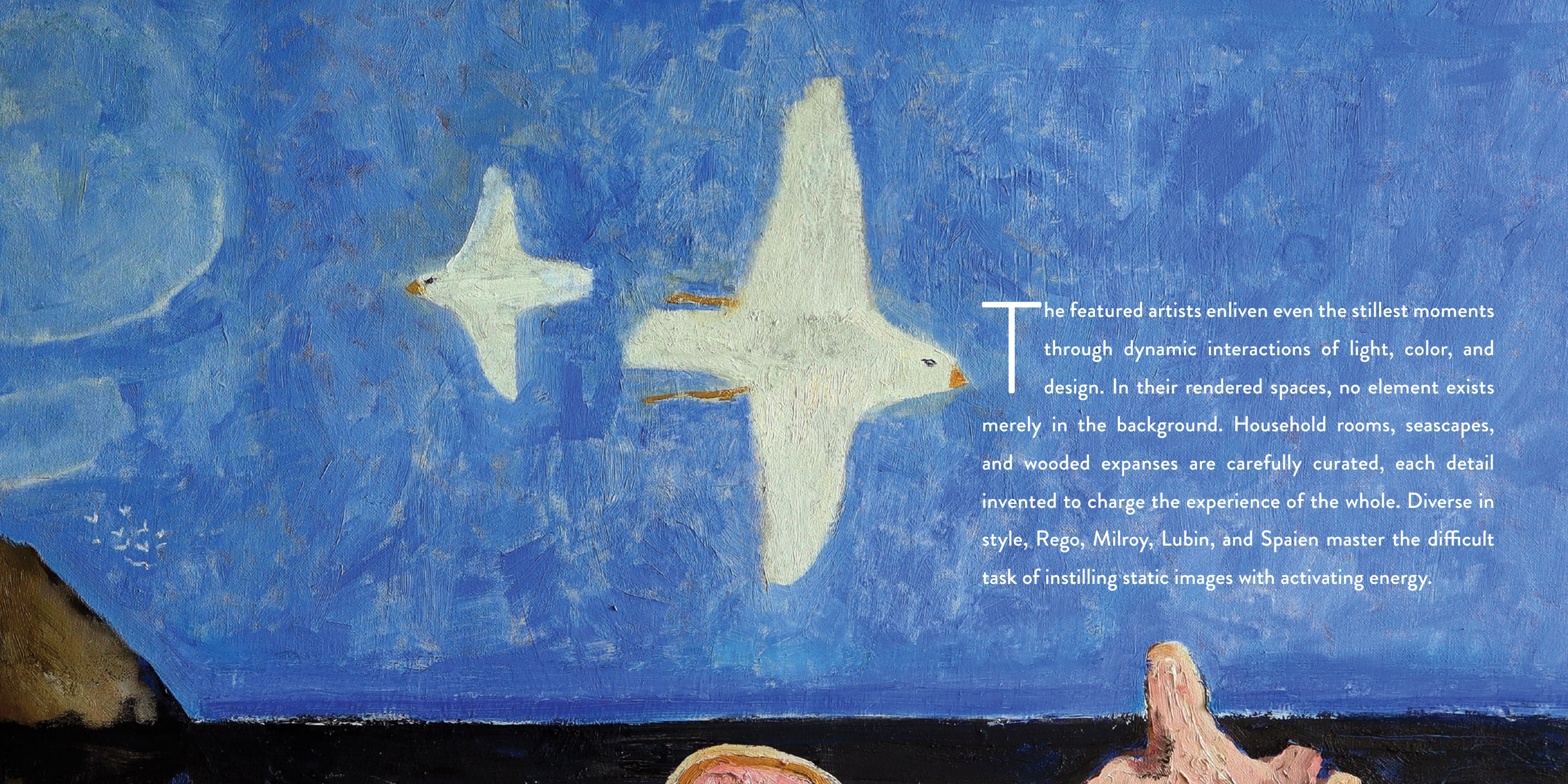
ACTIVATED SPACES

AUGUST 4 – SEPTEMBER 4, 2022

A POP-UP EXHIBITION IN PORTLAND, MAINE

SARAH LUBIN BRIAN REGO

MARK MILROY GAIL SPAIEN



The featured artists enliven even the stillest moments through dynamic interactions of light, color, and design. In their rendered spaces, no element exists merely in the background. Household rooms, seascapes, and wooded expanses are carefully curated, each detail invented to charge the experience of the whole. Diverse in style, Rego, Milroy, Lubin, and Spaien master the difficult task of instilling static images with activating energy.



SARAH LUBIN

The women in Sarah Lubin's (Boston, MA) world inhabit spaces that contain and connect. Outstretched arms and lithe bodies mirror surrounding architecture, creating an inextricable link between subject and setting, person and place. As though choreographed on a stage, Lubin's figures hold poses that suggest mid-action. The air between her characters compresses into flattened shapes of solid color, transforming negative space into activated forms. Despite partaking in everyday routines — such as peeling an orange or tending to the dishes — Lubin's women convey contained drama as shadows veil and intersect their sculptural features.

SARAH LUBIN

Courtyard

2021

Acrylic & acrylic gouache on linen

12 x 12 inches



SARAH LUBIN

Esplanade

2019

Oil on canvas

48 x 36 inches



SARAH LUBIN

Geranium

2019

Oil on canvas

16 x 20 inches



SARAH LUBIN

Indoor Games

2018

Oil on canvas

24 x 30 inches



SARAH LUBIN

Loafer

2020

Acrylic on canvas

12 x 9 inches



SARAH LUBIN

The Spoon

2017

Oil on canvas

46 x 36 inches





MARK MILROY

Inspired by personal experience and memory, Mark Milroy (Brooklyn, NY) creates narrative paintings that invite curiosity. He utilizes a vivid palette and gestural applications of oil to animate his subjects, which range from portraits of sitters, to imagined still-lives, to land-and-seascapes that glint with movement. Milroy's compositions contain both a flattening of space and a weightiness of subject matter. This engaging tension, along with his use of dramatic scale, enhances the presence of his forms. Often, Milroy portrays moments of action seen in the distance that draws attention to every edge and corner, including soaring flocks of gulls, riders on horseback, and swimmers diving off cliffs.

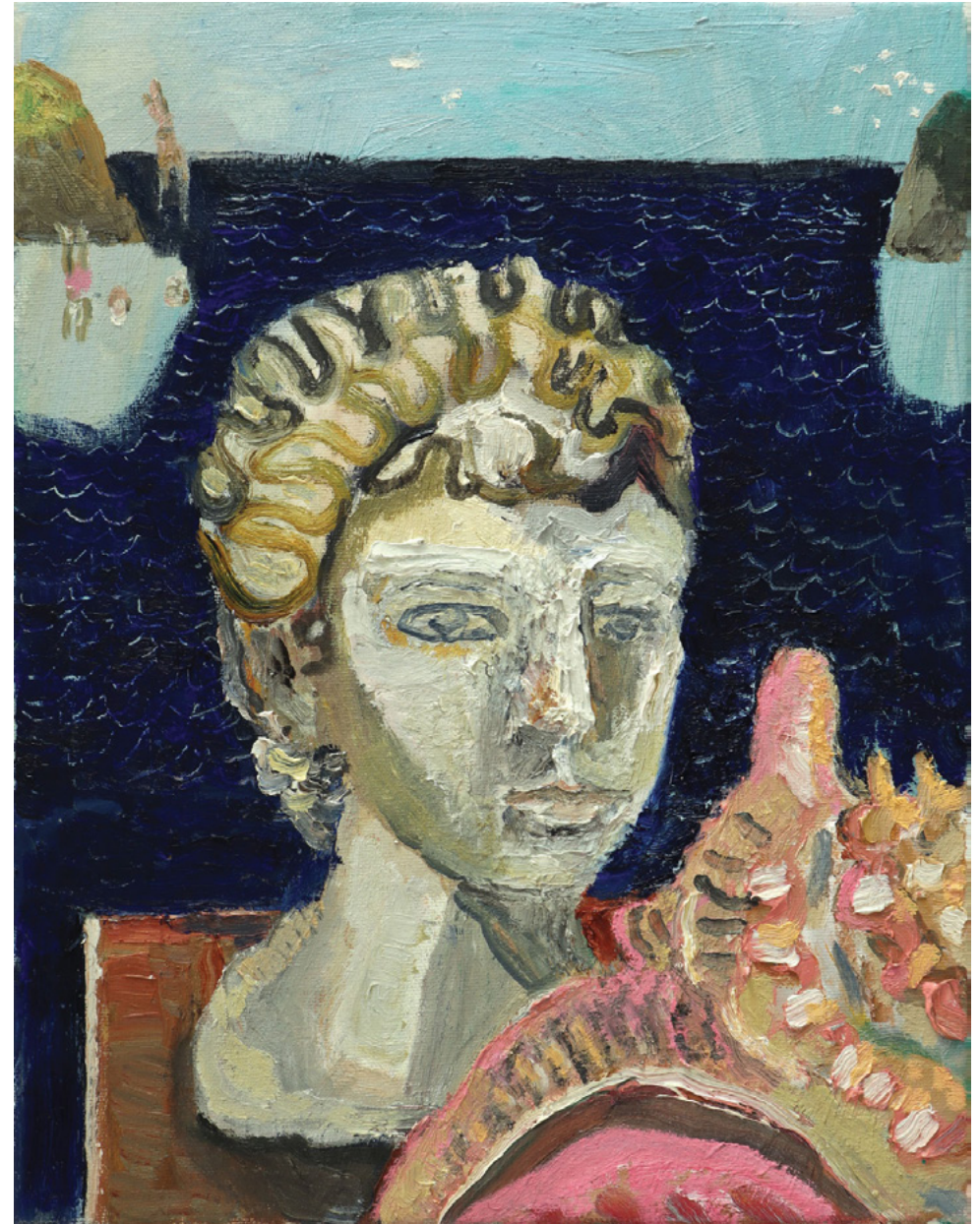
MARK MILROY

Salacia

2022

Oil on canvas

14 x 11 inches



MARK MILROY

Last Day of Autumn

2021

Oil on canvas

48 x 36 inches



MARK MILROY

Bagaduce

2022

Oil on canvas

20 x 18 inches



MARK MILROY

Still Life with Snake

2020

Oil on linen

19 x 15 inches



MARK MILROY

First Day of Summer

2022

Oil on linen

30 x 30 inches





BRIAN REGO

Brian Rego (Charleston, SC) transports the viewer into a state of motion by depicting moments glimpsed through a peripheral view. His outdoor scenes are accentuated by figures caught unawares, as though captured by a snapshot. Sloping horizon lines create skewed perspectives that encompass yet expand, giving the impression of landscapes that breathe, inhaling and exhaling. Rego uses tactile brushwork to evoke the energy and physicality of a scene. He accumulates oil paint in daubs of earth tone, communicating the essence of his subjects with few additive marks. Rich shadows — from clouds, flying birds, and foliage — cast abstracted forms that cause the works to ripple with movement.

BRIAN REGO

Girl in a Garden

2020–21

Oil on canvas

20 x 29 inches



BRIAN REGO

Boats on Stono River

2020

Oil on board

14 ¼ x 17 inches



BRIAN REGO

Encircled

2021

Oil on canvas

16 x 20 inches



BRIAN REGO

Succession

2021

Oil on canvas

28 x 36 inches



BRIAN REGO

Fishing Day

2021

Oil on canvas

14 ¼ x 18 inches



BRIAN REGO

Girl on Dock

2020

Oil on board

14 x 17 ½ inches





GAIL SPAIEN

Gail Spaien (South Portland, ME) paints interior rooms with windows looking out over perfected views of nature. Geometry plays a significant role in her impossible quest for such ideal conditions. Spaien arranges her spaces within invisible grids, constructing environments that celebrate precision and welcome contemplation. Reducing objects to their essential forms — while also embracing pattern — Spaien captivates our attention through her use of clean edges and symmetry. No figures exist in her scenes, but clues of human life are abundant: an unfinished puzzle, a filled teacup, an open laptop. This suggestion of habitation infuses Spaien's work with a psychological presence and awakens what would otherwise be a still scene.

GAIL SPAIEN

Still Life with Water #6

2020

Acrylic on linen

34 x 36 inches



GAIL SPAIEN

Anchored Out #1

2021

Acrylic on linen

22 x 20 inches



GAIL SPAIEN

Serenade #9

2017

Acrylic on linen

38 x 40 inches



GAIL SPAIEN

Anchored Out #6

2021

Acrylic on linen

22 x 20 inches



GAIL SPAIEN

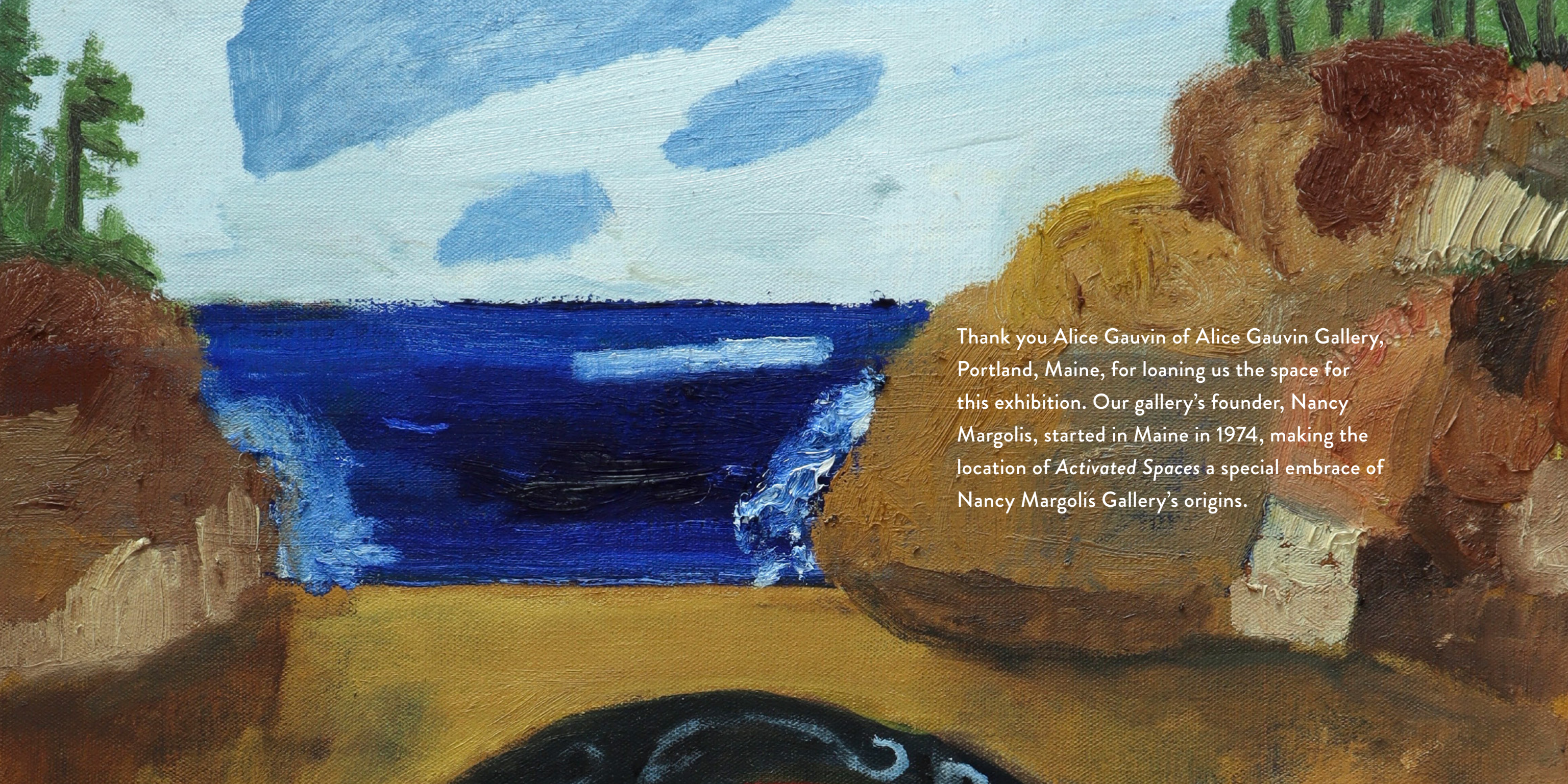
Observed Landscape #7

2022

Acrylic on linen

48 x 48 inches





Thank you Alice Gauvin of Alice Gauvin Gallery, Portland, Maine, for loaning us the space for this exhibition. Our gallery's founder, Nancy Margolis, started in Maine in 1974, making the location of *Activated Spaces* a special embrace of Nancy Margolis Gallery's origins.



Catalogue © 2022 NANCY MARGOLIS GALLERY of NEW YORK, Inc.
Designed by Lilian Day Thorpe.

Courtesy of Nancy Margolis Gallery of New York, Inc. All rights reserved.

Photography of Gail Spaien's works: David Clough, Luc Demers.

No part of this publication may be reprinted, reproduced, or transmitted in any form or by any other means,
electronic or mechanical now known or hereafter invented, without written permission of publisher.

www.nancymargolisgallery.com
margolis@nancymargolisgallery.com

